

IMPACTED BUSINESSES

These businesses will remain
OPEN during construction

Advance Auto Parts
6804 W. National Ave.
414-256-8074

Antigua Latin Inspired Kitchen
6207 W. National Ave.
414-256-8074

Epikos Church
6229 W. Greenfield Ave.
414-963-9010

Expert Car Care Inc.
6803 W. National Ave.
414-456-1640

McGuire's Bar
6235 W. National Ave.
414-774-0445

Milwaukee Homeless Veterans Initiative
6300 W. National Ave.
414-257-4111

Milwaukee Radon Home Mitigation
6301 W. National Ave.
414-455-7279

Oniomania
6430 W. National Ave.
414-727-9797

OPE! Brewing Co.
6751 W. National Ave.
414-509-6700

Pick N' Save
6760 W. National Ave.
414-476-6061

Powerful Nutrition & Fitness
6227 W. National Ave.
414-253-2313

Stallywood
6827 W. National Ave.
414-539-5650

Studz Pub
6833 W. National Ave.
414-607-8839

Z's Bar
6309 W. National Ave.
414-774-8100

831 Tattoos
6231 W. National Ave.
414-800-5887wi

MORE INFORMATION

Maps, plans, and timelines
www.westalliswi.gov/nationalave

Steve Graetz
Construction Project Leader
cebsllc-steven@sbcglobal.net
414-313-5965

Rob Hutter
Assistant City Engineer
City of West Allis Engineering Department
rhutter@westalliswi.gov
Office: 414-302-8373
Cell: 414-587-1699



2023



NATIONAL AVE. CONSTRUCTION 62ND TO 65TH ST.

RESIDENT & VISITOR GET AROUND GUIDE



Subscribe to receive text or email
updates about this project at:
www.westalliswi.gov/notifyme

www.westalliswi.gov/nationalave

IS THERE A DETOUR?

National Ave. will be closed from 62nd to 65th in 2023 starting tentatively March 20th, weather permitting, through fall. Message boards will be installed a week prior to road closure.

Businesses will be open. Access coordinated throughout construction progress.

Official signed detour will use Greenfield to 70th St.

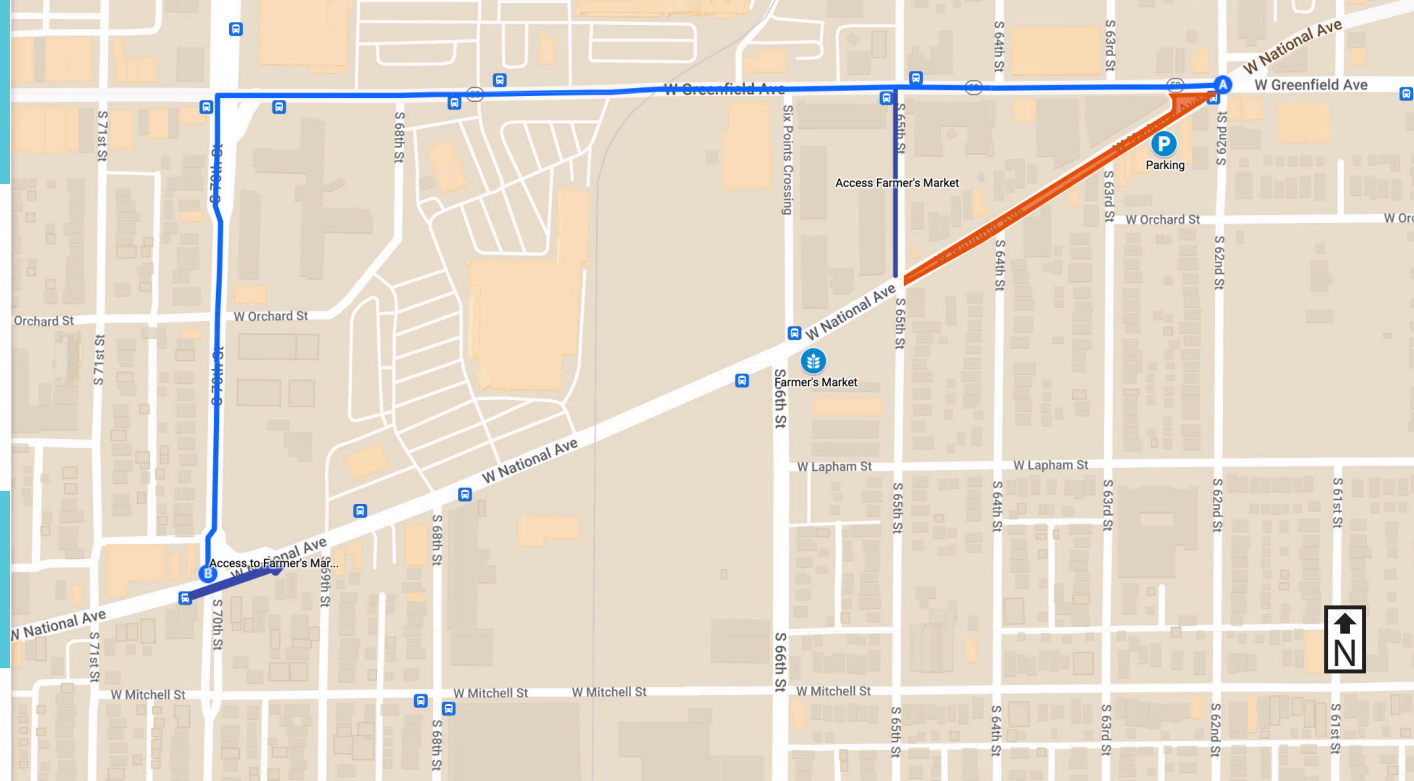
WILL THE FARMERS MARKET BE IMPACTED?

The West Allis Farmers Market will be open during it's normal business hours from May 6 to November 25 and accessible during construction. Access does not change from the west and there will be detour signs to follow coming from the east. Visitors can also use Greenfield to 65th and Six Points to access Farmers Market

DETOUR INFORMATION

The City of West Allis and the Wisconsin Department of Transportation hired GRAEF to design the reconstruction of W. National Ave. from S. 62nd St. to S. 65th St. in West Allis.

- 2-lane roadway with parking and bike lanes provided on both sides of street
- Replacement of sidewalk and curb ramps throughout project limits
- Replacement of storm sewer, sanitary sewer, water main and service laterals
- Bump outs at select intersections
- Brick terraces, raised planters, bicycle racks and trash receptacles



 Farmer's Market

 Construction

 Parking

 Access Farmer's Market

 Access to Farmer's Market

PARKING

On-street parking during construction will be provided on neighboring streets. On-street parking permits will not be needed during construction. Police will increase patrols in the surrounding neighborhood.

Disabled parking spaces can be requested if there is a need. Contact the construction leader. There's a parking lot between 62nd and 63rd also.

GETTING AROUND, MADE EASY



Ride MCTS

Visit ridemcts.com/routes-schedules for bus routes and schedules.



Bubl Bikes Bikeshare

There are eight Bubl stations in West Allis. For locations and to purchase passes, visit bublrbikes.org.