

PROPOSED SITE FURNISHINGS



"PLAINWELL" BENCH AND TRASH & RECYCLING RECEPTACLES BY LANDSCAPE FORMS

CUSTOM WEST ALLIS BIKE RACK

PRECAST CONCRETE CURBING AT ROADWAY BUMP-OUTS



STREET TREE CONDITIONS



3' X 12' DECORATIVE TREE GRATES BY NEENAH FOUNDRY

ACCENT PAVING - "PLANK" PAVERS



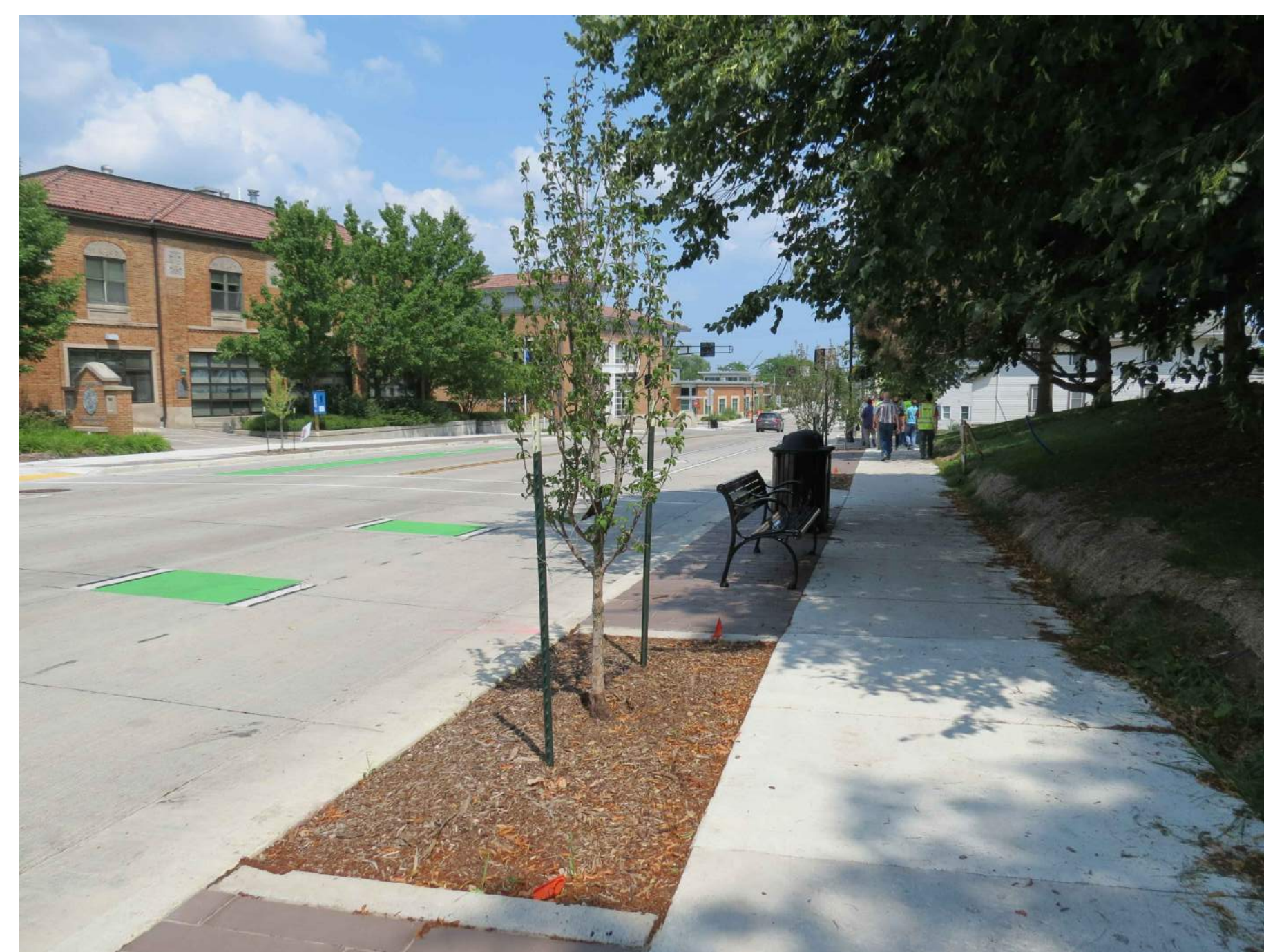
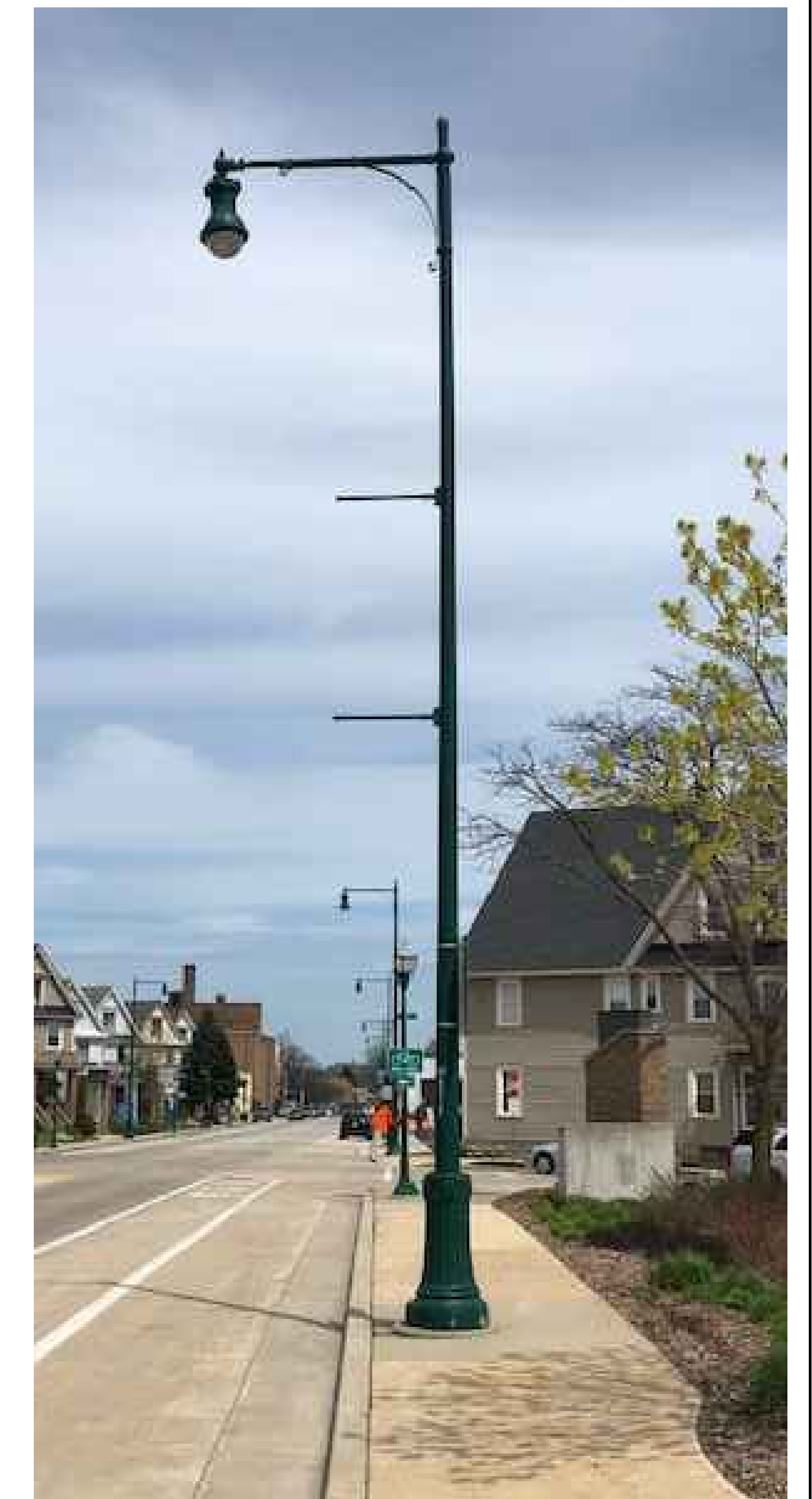
WOODEN SIDEWALKS, 1919. The older sections of West Allis were lined with wooden sidewalks. This walkway in William Shenners subdivision, east of South Sixtieth Street and north of National Avenue, shows the unevenness and problems of a wood sidewalk. In the 1920s, the city gave homeowners a tax incentive to repair the sidewalks. Maintenance was an ongoing issue and concrete sidewalks replaced many of them in the 1930s.

HISTORIC 'WOOD' SURFACE TEXTURE FOR PAVERS IN ROADWAY TERRACE



'STANDARD' SURFACE TEXTURE FOR PAVERS AT ROADWAY CORNERS - HERRINGBONE PATTERN

EXISTING ROADWAY LIGHTING (TO REMAIN)



AT-GRADE TREE PLANTERS WITH SHREDDED BARK MULCH

National Avenue, S. 65th to S. 62nd Street

Streetscape Amenities

City of West Allis, Wisconsin

